



# SOCIETY FOR PEDIATRIC PATHOLOGY

---

## NEWSLETTER

Summer 2000

---

### FROM THE EDITOR'S DESK

*Arthur Weinberg, MD*

---

### PRESIDENT'S MESSAGE

*Claire Langston, MD*

As Dr. Rogers notes in her committee report elsewhere in this issue, we are in the midst of changing our website host from the University of Pittsburgh to a commercial firm. The editorial board overseeing the site will be expanded and updates and deletions will be made directly by the board member responsible for a particular section of the site. As part of this initiative, we will be creating a web-based newsletter to replace the printed version that you are accustomed to receiving. Each quarter, you will be notified by e-mail that the new newsletter has been posted on the web. It is extremely important that you inform the Society administrative office of your current e-mail address as soon as possible. It is also important that you keep this information up to date, as additional important Society functions likely will be transferred to the web as we continue to streamline our operations. The savings created by converting from a printed newsletter to an electronic one is considerable and will contribute to the financial stability of our organization. There may be a few members who still lack Internet access. We can print a copy of the newsletter from the web and mail this to members who fall into that category, but requests for such must be made directly to the administrative office. The computer is now a vital part of our practice and pleading computer illiteracy is no longer a tenable position to hold.

This summer newsletter brings important information on changes in our operation that will inevitably affect Society management. The move of the website should lead to more efficient communication with members, will provide a more stable environment for the dissemination of Society news and events and, hopefully, will lead to improved member services. The value of the website is in the opportunity for continuous contact, rather than the intermittent appearance of the Newsletter, and even less frequent meetings. The pedpath listserv has provided a forum for informal discussion and interaction and it fulfills this role well, but it is not a substitute for an effective website. The leadership of Beverly Rogers and the support of Art Weinberg in the movement of the website have been invaluable, and I am personally grateful to them both for their efforts to make the website/newsletter combination an effective tool for Society management.

The relatively small size of our Society has made for an intimacy that is quite enviable, but to some extent we have given this up for centralized office management. Our move to a central office provided improved continuity of some managerial tasks and relieved Society officers from many onerous chores, but other problems have surfaced. It has become clear that some of our expectations for the role of the central office were either misunderstood or unrealistic. The central office faults the Society for failing to take full advantage of its management team, while Society leadership has been reluctant to hand over many organizational tasks to the central office for a variety of reasons. It is often not clear who is responsible for carrying a project through to completion, and much of the work of the Society is still being done by volunteer members who take ownership of issues and directly address the tasks at hand. Members have experienced some frustration in this environment and don't know where to turn. This is not the vision that prompted our move to professional management. Nor, to be fair, does our management office view this as a satisfactory situation. There has been a continual re-examination of the role of the central office in the functioning of our Society, but changes in scope of their responsibilities have been relatively minor. It may seem to some that we have been slow to take advantage of new opportunities afforded by our website, but we will soon have an improved management tool with an organizational structure that should allow us to better handle our routine affairs in ways that, historically, have been more comfortable for our members. Our operations will evolve, as we become more experienced with the use of this new technology.

On another note, later this summer the membership will be polled on the issue of monetary support for the bound volumes of Perspectives in Pediatric Pathology that have been compiled from the Perspectives articles that lead each issue of

---

*Continued on page 2*

**Summer 2000, page 1**

Continued from page 1

Pediatric and Developmental Pathology. This poll will arrive as a separate mailing, rather than as an insert to the Newsletter. The Publications Committee and Council require the guidance of the membership in this area. Please look for this poll, consider the information provided carefully, and return your response. The poll results will be discussed at the Interim Meeting in Vancouver and will shape Society policy in this area.

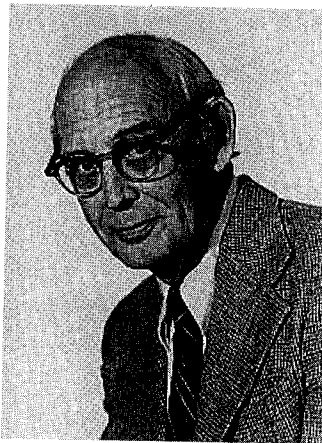
The upcoming Interim Meeting promises to be interesting, with a wonderful venue and a stellar symposium and scientific and social programs. Meanwhile, enjoy your summer, and I'll see you in September — in Vancouver.

Love, Claire

---

## TWO OF OUR FINEST ARE LOST TO PEDIATRIC PATHOLOGY IN MEMORIAM

### Benjamin H. Landing 1920-2000



Ben Landing was a great teacher and mentor who was blessed with a creative, fertile mind and a photographic memory. But he was a lot more than an intellect. He was REAL—very human and sincerely interested in his trainees and colleagues. He was reserved, but had a great sense of humor, often subtle, as with everything else about him. His modest demeanor and lack of

arrogance made him approachable and easy to talk to. He was available to his trainees at any time. But he was no saint. He had enough foibles to make him interesting and human. He did not like administration or administrators. He was generous, but often to a fault. He smoked too much. His dichotomy of greatness and understated elegance is rarely encountered. We who had the privilege of working with him will not forget the legend or the man. Ben Landing's passing is sad, but his life was exhilarating.

--Beverly Dahms

Ben was a Gentle Man, slow to speak ill of others, fast to respond to the needs of others, and always available to participate, at his own expense, in meetings anywhere in the world. He amazed us with the depth and breadth of his

knowledge, apparently never having forgotten a case, an anecdote, or a name in his entire life. Always able to put a novel spin on any conundrum, to place anatomical analysis on a physiological and functional basis, and to spot the abnormality we mortals had overlooked. Few if any of us were able to get close to Ben the Man, but all of us loved Ben the Teacher, Ben the Role Model, Ben the Inspiration. Yet part of Ben still lives in hundreds of us, and will be passed on to those we teach.

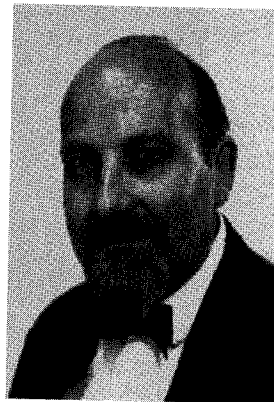
--Bruce Beckwith

Ben was a legend in his own time and his passing leaves a tremendous void. But his legacy is phenomenal testimony to what one individual can accomplish, not only through his own research, but also through the mentoring of so many pediatric pathologists. I would not be surprised if Ben taught directly or indirectly a third of the pediatric pathologists in the entire world. Although far smarter than most of us and armed with a photographic memory, he was a gentle man of patient manner and never elevated his stature by denigrating his colleagues and trainees. He will be sorely missed, but dearly remembered.

--Henry Krous

(You may wish to reread *Founders of Pediatric Pathology: Benjamin Harrison Landing* by Beverly Dahms in *Perspectives in Pediatric Pathology* 1997;20:1-13)

### John L. Emery - 1915-2000



John Emery, Emeritus Professor of Pediatric Pathology, University of Sheffield, tragically died from smoke inhalation on May 1, 2000 while attempting to retrieve his dog from his blazing home. Small in stature but huge in the breadth and depth of his knowledge, intellectual vigor and talent as an artist and poet. He will be remembered as a man of fearless integrity and compassion with a teasing, twinkling in his eyes.

In 1947 he was appointed consultant pathologist for the newly established Children's Hospital in Sheffield where he remained for the next 33 years, and where he became Professor and Chairman of Pediatric Pathology.

**SOCIETY FOR  
PEDIATRIC PATHOLOGY**

**ABSTRACT DEADLINE:**

**Abstracts must be received  
no later than:  
September 19, 2000**

**PRESENTATION  
CHOICE**

Poster

Either poster or podium

- Vawter Pathologist-In-Training  
Award  
 Neustein Award

**CHECKLIST**

- Format corresponds to sample  
 Completed envelopes enclosed  
 1 original abstract  
 4 copies of abstract with title  
and abstract only - **no  
authors or affiliations**  
 Presentation choice checked  
 Abstract is typed within lines  
 Computer disk of abstract

**MAIL ORIGINAL AND  
4 PHOTOCOPIES TO:**

Society for Pediatric Pathology  
National Office  
6728 Old McLean Village Dr.  
McLean, VA 22101 USA

**FAX TRANSMISSIONS  
NOT ACCEPTED**

**This form may NOT  
be duplicated.**

**SAMPLE FORMAT FOR TYPING ABSTRACTS: J. Doe, M.D.; Q. Smith, M.D.; and Z. Jones,  
M.D. City University Medical College, Anywhere, AL and People's Hospital, Somewhere, CA.**

- ◆ This is an example of the format to be used when there are multiple authors.
- ◆ Include only academic degree, name of institution and city and state.
- ◆ It is not necessary to skip a space between paragraphs. Just indent each paragraph three spaces.
- ◆ Abstracts should contain factual information; generalities such as "results will be discussed" should be avoided. It is suggested that the abstract include:  
1) subject of study, 2) methods (where appropriate), 3) results and 4) conclusions

Name and Address of Author for Correspondence: \_\_\_\_\_  
\_\_\_\_\_  
\_\_\_\_\_  
Telephone Number: \_\_\_\_\_ FAX: \_\_\_\_\_

Name of presenter if not first author: \_\_\_\_\_

*This abstract has not been published or presented at another major meeting  
within the past six months.*

SIGNATURE OF SPP MEMBER OR SPONSORING MEMBER: \_\_\_\_\_  
NAME: (Print): \_\_\_\_\_

SIGNATURE OF SENIOR AUTHOR (IF DIFFERENT): \_\_\_\_\_  
NAME: (Print): \_\_\_\_\_

I wish to receive SPP meeting registration information.

**REGISTRATION** - Authors presenting the accepted scientific entries will be required to pay the  
general registration fee for the meeting.

# SOCIETY FOR PEDIATRIC PATHOLOGY – 2001 ANNUAL MEETING

Atlanta, GA • March 3-4, 2001

## Abstract Submission Instructions

Abstracts must be submitted using the Abstract Submission Form. A disk must also be submitted with the abstract text. This will be used to post abstracts on the SPP website prior to the meeting.

- 1. Deadline:** Abstracts must be mailed (fax transmission will not be accepted) no later than September 19, 2000. If mailed from outside the United States, abstracts must be postmarked by September 14, 2000.
- 2. Format & Content:** Abstracts submitted in paper format must be typed on the original form (on the reverse) and will be used as a carbon copy. A photocopy of this original form is not acceptable. If the abstract is accepted, it will be printed (unedited) exactly as typed. **PROOFREAD CAREFULLY.** Abstracts must be succinct and contain factual information. Generalities such as "results will be discussed" are unacceptable. It is suggested that the abstract include: a) a subject of study, b) methods (when appropriate), c) results, and d) conclusions. An abstract must present new information that has never been published or presented at another major meeting within the past 12 months. Papers will be accepted on the basis of scientific data, relevance to pediatric pathology, timeliness and likelihood that they will stimulate discussion. Case reports are discouraged and will be considered only if they provide exceptional insight into a problem. Follow the illustration on abstract sheet and directions below.
- 3. Directions for Typist:** The abstract must fit within blue borders on the submission form or it will be rejected. **DO NOT BLACKEN THE BORDERS OF RECTANGLE.** Do not erase. Single space entire abstract. Do not sequence letters or lines. Check accuracy of spelling. Capitalize entire title. Do not underline author's name(s). Initials of first name should precede last name, followed by degree. Use only institutional affiliation and city/state/province. Do not list street address or zip code. Do not start author's name on a new line unless necessary. Indent paragraphs 3 spaces. Do not skip a space between paragraphs. The minimum acceptable font sizes 11 point for computer (scaleable) fonts, and **12 point** for all fonts. **DO NOT USE A DOT MATRIX PRINTER.**
- 4. Criteria for Scoring:** Abstracts will be ranked on a scale of 1 – 5 (with 1 being the lowest and 5 being the highest) according to the following six characteristics: 1) Originality, 2) Importance, 3) Research design, 4) Data analysis, 5) Conclusion, and 6) Quality of writing.
- 5. Presentation Choice:** Papers will be presented at podium sessions on Saturday and Sunday. Because of time constraints, the number of podium presentations will be limited and must be no more than 10 minutes long to allow 5 minutes for discussion. Authors are encouraged to give maximum flexibility to the Abstract Committee by checking "either the podium or poster" box. Posters will be 3'10" by 5'10" wide.
- 6. Gordon Vawter Pathologist in Training Award:** The Gordon Vawter award honors the most meritorious platform of poster presentation by a trainee (medical student, resident, or fellow in pathology or pediatric pathology). The work must be substantially that of the trainee. Authors who wish to be considered for the award must check the appropriate box on the abstract form.
- 7. Harry Neustein Electron Microscopy Award:** The Harry Neustein Award honors the platform or poster presentation most meritorious in utilizing electron microscopy, new methodological advances in molecular technology or immunohistochemical techniques or development of other innovative technological advances that pertain to pediatric pathology. Authors who wish to be considered for the award must check the appropriate box on the abstract form.
- 8. Sponsorship:** All abstracts must be signed by a member of the SPP. This individual can either be an author or sponsor. The senior author must attest to the originality of the abstract.
- 9. Notification of Acceptance/Rejection:** Send two (2) self-addressed stamped business envelopes (not postcards). One envelope will be returned upon receipt of the abstract; the second will be used to inform you of the decision of the Abstract Committee.
- 10. Required Submission Material:** a) Original Typed abstract form with author's name and affiliations, b) Four (4) high quality photocopies with title only (exclude author's name and affiliations), c) The abstract text on disk for posting abstracts on the SPP website prior to the meeting.

**SUBMIT TO:**

Society for Pediatric Pathology  
6728 Old McLean Village Drive  
McLean, VA 22101-3906 USA  
Phone: 703/556-9222  
email: SocPedPath@degnon.org

## COMINGS AND GOINGS

His early publications covered a wide range of subjects including particularly hydrocephalus and developmental pathology. Motivated by the loss of his first child, he became interested in sudden infant death. Although he published widely on the pathology of crib death, his major interest in recent years was the establishment of a program CONI (Care of Next Infant). This was developed through a system of confidential inquiries into infant deaths and has formed part of the British Department of Health Confidential Inquiries into Stillbirths and Deaths in infancy now used throughout England, Wales and Northern Ireland. This program provides a system of practical support to all parents having a subsequent child following crib death.

John Emery was a fellow of the Royal College of pediatrics and Child Health and an Honorary Fellow of the Royal Society of Medicine. In 1987 he received the James Spence Medal from the British Pediatric Association, the only pathologist to receive this honor. In 1976 he set up a committee to integrate the worldwide Pediatric Pathology Societies, and in 1978 the International Pediatric Pathology Association was established. In 1979 he instituted the Advance Courses in Pediatric Pathology. He received numerous honors and awards and served on many editorial boards including *Pediatric Pathology* and *Archives of Disease in Childhood*. He had over 355 publications, many chapters in textbooks and several books.

Other than Pediatric Pathology he was a noted artist and past President of the Sheffield Fine Art Society. Those who knew John never thought of him without his sketchbook. He would sit in meetings sketching the speaker as well as members of the audience. He is said to have had over 300 sketchbooks. He enjoyed writing poetry and had been President of the Sheffield Literary Society. Each year his friends would receive his most recent addition of poems, many designated as "Grandfather's Folly". John Emery is survived by his wife, Mytts, to whom he was happily married for almost 60 years, six children and 18 grandchildren.

Bruce Beckwith has written "it is inexpressibly sad that this year has deprived Pediatric Pathology the mortal presence of two of its greatest-perhaps even its two greatest names: John Emery and Ben Landing".

--Enid Gilbert-Barness

(You may wish to reread *Founders of Pediatric Pathology: John Emery* by AH Cameron in Perspectives in Perspectives in Pediatric Pathology 1992:16:1-6)

- Alex Knisely will trade the heat of Galveston for the fog of London on September 1 to become a consultant at the Institute for Liver Studies at Kings College. He can be reached at:

Alex Knisely  
Institute for Liver Studies  
Kings College Hospital  
Denmark Hill  
London SE5 9RS UK  
Alex.knisely@kcl.ac.uk

- Denis Benjamin has left the dull vistas of Seattle, Washington for a ranch under the sunny skies of Fort Worth, Texas. He can now be found in the Directors office at:

Denis Benjamin  
Cook Children's Medical Center  
801 Seventh Ave  
Fort Worth, TX 76104  
817-885-4289  
FAX 817-885-4316  
e-mail [dbenjamin@cookchildrens.org](mailto:dbenjamin@cookchildrens.org)

- Virginia Baldwin, retired since 1999, will begin a two-year Diploma Program in Textile Art in September. "It was quite a shock to go back to campus and feel as though I had dropped into the largest day care site in the country - did we look that young then? I'm looking forward to gaining some tools to turn design ideas into fabric and fibre art. When you think of it, our job is pattern recognition, and there are wonderful patterns in the daily turn of pathology. So I'll be looking to blend my past and future. I'm not sure what I'll do with placental patterns yet, but I'll think of something."
- Roger Williams stepped down as Chief of Pathology at Children's Hospital of Oakland to serve as president of the medical staff. Jon Rowland, from LA Children's, is the new chief.
- Denise Malicki joined Henry Krous' department in San Diego after completing her fellowship at Texas Children's Hospital.

### **SPP NATIONAL OFFICE:**

6728 Old McLean Village Drive  
McLean, Virginia 22101  
Phone: 703-556-9222  
Fax: 703-556-8729  
Email: [SocPedPath@degnon.org](mailto:SocPedPath@degnon.org)  
Website: <http://path.upmc.edu/spp>

## COMMITTEE REPORTS

### PUBLICATIONS COMMITTEE

*Beverly Rogers*

The Web Site is the headline news for this quarter. We are in the process of moving the site to a commercial venture called HealthIT, and are currently updating and redesigning the site. The move should be accomplished in the next few months; we will let you know when this occurs. One of the major initiatives will be to place the e-mail addresses of our members into a single file, so that information can be disseminated to all members through the network. We will let you know via e-mail when important announcements are posted on the Web Site, so it is very important to assure that your e-mail address on file with the Central Office is accurate and up to date. Dr. Weinberg will also be moving the newsletter onto the Web Site. We will no longer have a print version, which will result in significant savings to the Society. Instructions for getting information posted onto the Web Site will be forthcoming following the move.

Dr. Benjamin has moved to Fort Worth (yes, that's in Texas) to become director at Cook Children's. For now, he is keeping the editorial office in Seattle, where Linda Siebert continues as his editorial assistant, so manuscripts should still be submitted to the Seattle editorial office address. Please keep *Pediatric and Developmental Pathology* in mind when you consider where to submit your manuscripts. It is extremely important to keep quality manuscripts coming to our journal.

### LONG TERM PLANNING COMMITTEE

*Derek De Sa*

The committee will meet on Saturday, September 23<sup>rd</sup>, after Lunch. The main items to be discussed will be based on the discussions at the Millennium Lunch the proceeding Friday. Topics for discussion include (a) the relationship between the SPP and the Perinatal Interest Group, (b) the role of formalized transfer periods between different centres during Fellowship training, (c) other topics to be decided on. Each Millennium table will have a "moderator/leader" of the discussion, who will be responsible for bringing the gist of the discussion at his/her table to the Saturday meeting of the LTP. It is hoped that this will give everyone a chance to consider the matters, express an opinion, and have their voice heard in the LTP. The list of topics is neither exclusive nor carved in stone; if there are other issues that may impact on the future development of the SPP, these can be raised at the lunch as well. This particular format was chosen to allow a combination of a wide expression of views, as well as a manageable LTP meeting.

### NOMINATING COMMITTEE

*Ron Jaffe*

The Nomination Committee is seeking suggestions for nominees for president-elect and two members of Council. Please send your suggestions to Ron Jaffe, the chair of the committee, as soon as possible. The committee will consider your input and make its recommendation to Council at the Vancouver meeting in September.

## ANNOUNCEMENTS

### AUCTION AT THE VANCOUVER MEETING

The list of auction items is impressive and can be seen on the web page "[www.pedlabmed.org](http://www.pedlabmed.org)". We can always do with some more! It's still not too late to submit a donation.

### SOLICITATION OF VOLUNTEERS

Any and all members interested in becoming more involved with the workings of the Society are strongly encouraged to contact president-elect, Ron Jaffe, as he makes plans for his forthcoming term as president.

### SPP INTERIM MEETING

SEPTEMBER 21-24, 2000

VANCOUVER, BRITISH COLUMBIA

*Jim Dimmick, M.D.*

The Department of Pathology and Laboratories, BC Children's and Women's Hospital, and the University of British Columbia Department invite you to join us in Vancouver for the interim meeting of the Society for Pediatric Pathology, September 21-24, 2000 (perinatal group meets September 21<sup>st</sup>). The venue will be Vancouver's Granville Island with the Emily Carr Art Institute lecture hall for presentations and the Granville Island Hotel for posters, accommodations and socializing.

### UPCOMING MEETINGS

- Latin American Conference in Buenos Aires - Oct 31, 2000. (Dr. Garcia de Davila)
- IPPA (with IAP) - Nagoya, Japan - October 15-20, 2000

## POSITIONS AVAILABLE

### Pediatric Pathologist — Assistant/Associate Professor with tenure

The Department of Pathology at the University of Pittsburgh School of Medicine has an opening for an Assistant/Associate Professor in the tenure stream at Children's Hospital of Pittsburgh, a full-service pediatric tertiary institute with a wide range of pediatric subspecialists and a busy multifaceted transplantation program. We are looking for an associate who will share in the diagnostic rotation and carve out an area of special interest. The person we are looking for should be trained and be board certified or eligible in pediatric pathology. We are hoping to find someone who is enthusiastic about diagnostic pediatric pathology but also has a research interest, preferably with a molecular diagnostic component. The Department of Pathology at the University of Pittsburgh has a wide repertoire of research interests, and collaborations are encouraged.

Please provide a curriculum vitae and names and addresses of three references to: Ronald Jaffe, MD, Director of Laboratories, Children's Hospital of Pittsburgh, 3705 Fifth Avenue, Pittsburgh, PA 15213. Equal Opportunity/Affirmative Action Employer.

### Fellowship in Developmental and Pediatric Pathology

A Developmental and Pediatric Pathology Fellowship position at Brown University School of Medicine affiliated hospitals is available for July 1, 2001. This is a two-year training program, certified by the ACGME, with equal time and emphasis in diagnostic pathology and research. Fellows will gain experience in diagnosis of genetic and metabolic disease, infections, neoplasia and malformations, and in pediatric forensic pathology and neuropathology, utilizing the resources and faculty of Brown University, Women and Infants' Hospital, Rhode Island Hospital/Hasbro Children's Hospital and the Office of the Rhode Island Medical Examiner. The yearly case load includes approximately 175 autopsies, including SIDS and child abuse, 2,500 surgical specimens and bone marrow examinations, 1,500 cytogenetic samples, 250 molecular diagnostic samples, 150 metabolic studies, 3,000 placentas and 1,000 examinations of abortuses, embryos and early fetuses. Candidates must have a MD degree or equivalent and not less than three years of training equivalent to an accredited pathology residency in the United States. The stipend will be appropriate to candi-

dates in the fourth to sixth year of training. Health and medical malpractice insurance, three weeks of vacation, and travel to scientific meetings are provided.

H. Pinar, MD  
Developmental and Pediatric Pathology Program  
101 Dudley Street, Providence, RI 02905  
Ph: (401) 274-1122 Extension 1190  
E-mail: [hpinar@wihri.org](mailto:hpinar@wihri.org)

### Fellowship in Pediatric Pathology

The University of South Florida/Tampa General Hospital/All Children's Hospital program is seeking applicants for a July 2001-June 2002 fellowship position. The fellowship offers an exciting and extensive exposure to all aspects of pediatric pathology by combining the programs at Tampa General Hospital (TGH), a teaching hospital for the University of South Florida, and All Children's Hospital (ACH) in St. Petersburg. TGH is a 900-bed hospital with active pediatric and obstetric services and a strong fetomaternal medicine program. Over 200 perinatal autopsies are performed annually, which include examination of embryos, fetuses, newborns and pediatric cases. There is close interaction with the clinical services including a broad range of teaching and patient management conferences. At ACH, there is a very active program in molecular techniques, tumor pathology, PCR, FISH, flow cytometry procedures and research activities in pathology, immunology and molecular diagnostic pathology. Pediatric clinical pathology, including hematopathology, is an integral part of the program and the fellow is expected to participate in some research. The fellowship is approved by the ACGME and is for 1 year. A second year may be approved. Applicants should be either board certified or eligible in AP or AP/CP and be from an approved residency program. The stipend is commensurate with the level of postgraduate training.

Please contact:  
Enid Gilbert-Barnes, MD  
Department of Pathology  
Tampa General Hospital  
Davis Islands  
Tampa FL 33601  
Ph: 813-251-7565 FAX: 813-253-4073  
E-mail: [egilbert@tgh.org](mailto:egilbert@tgh.org)

**CURRENT FELLOWS (2000)  
AND JULY GRADUATES (GRAD):**  
Compiled by Alba Greco (Fellowship Committee)\*

**Barnes Hospital, St. Louis:**

Grad— Maureen O'Sullivan, MBBS; staff position  
Scotland  
Brian Strauss, MD; AFIP (air force duty)  
2000— Sean Pflaumer, MD

**Boston Children's:**

Grad - Philip Katzman, MD, Univ. of Rochester  
Robert Ruiz, MD, PhD, Research Fellow Brigham  
Juan Campbell, MD, Pediatric resident, Univ of  
Illinois  
Silvio Litofsky, MD, Baylor Heart Institute  
2000 - Keith Stringer MD  
Ivan Moskowitz, MD. PhD  
Weiming Lu, MD  
Abba Subair, MD, PhD

**Brown:**

Grad— none  
2000— Monique DePaepe, MD  
Nina Tatevian, MD

**Cardinal Glennon:**

Grad - David Brink, MD; Cardinal Glennon  
2000 - none

**Children's Hospital of Akron:**

Grad - Mark Steele, MD; Children's Hospital, Akron  
2000— Daniel Brown, MD

**Children's Hospital of Michigan:**

Grad - Christopher Murphy, MD; private practice

**Children's Medical Center of Dallas:**

Grad— Anirban Maitra, MD; completing residency (PGY4)  
2000— Grae O'Brien, MD, PhD

**Children's Memorial, Chicago:**

Grad - none  
2000 - Angelica Oviedo, MD

**CHOP:**

Grad— Mark Matthews, MD; Brackenridge Hospital,  
Austin, TX  
2000— Mariko Suchi, MD

**Cincinnati:**

Grad— Robert Yost, MD; Scottish Rite/Egleston, Atlanta  
2000— Brian Hornback, MD  
Rafal Kozielski, MD

**Columbus:**

Grad— Van Hung Nguyen, MD, Montreal Children's  
2000 - Eric Albright, MD

**Denver:**

Grad - none  
2000— Roberto Gianani, MD

**NYU:**

Grad - Hung Shou, MD; Primary Children's, Salt Lake  
2000 - Atif Ahmed, MD

**Pittsburgh:**

Grad— Jianghu Wang, MD; Surgical Path fellow, MD  
Anderson  
2000 - none

**Riley (Indiana):**

Grad— Barbara Fulton, MD; fellowship NCI  
2000 - none

**St Christopher's:**

Grad— Sandy Wu, MD; St. Vincent Medical Center, LA  
2000— Manjunath Heggere, MD

**Santa Rosa, San Antonio:**

Grad— Huma Sadiqui, MD, not known  
2000 - none

**SUNY:**

Grad— Laurel Waters, MD, Oakland Children's  
2000— Farifteh Rahmanou, MD

**Tampa General/All Children's:**

Grad— Marta Plaza, MD, Bella Vista Hospital, Puerto Rico  
2000 - Gabriel Chamyán, MD

**Texas Children's Hospital, Houston:**

Grad— Karen Thompson, MD; Univ. of Hawaii  
Denise Malicki, MD, PhD— Children's Hospital of  
San Diego  
2000— Hannes Vogel, MD  
Lora Darrisaw, MD

\*Please notify Dr. Greco of any significant additions or  
corrections to this list and they will be noted in the next  
newsletter.



## IPPA NEWS

Ivo Leuschner, secretary, IPPA

I would like to provide you with information regarding IPPA activities during the next International Congress of the IAP in Nagoya, Japan, in October of this year. A summary of the symposia, slide seminars, short courses, and companion meetings with interesting topics in pediatric pathology is included in this newsletter. I am sure that these conferences will be a great success and I hope that many of you will come to attend at least some of the sessions. The General Meeting of the IPPA will take place on Wednesday, October 18, 2000, at lunch time. During this General Meeting important questions will be discussed, including the use of IPPA money for funding and the question of raising the annual fee for IPPA members from \$2US to \$3US. In addition several new members have to be elected to Council. Lilian Boccon-Gibod, the chairman of Council, and four current members of Council will retire this year. A new President-Elect has to be nominated.

Travelling to Japan is expensive especially for people coming from developing countries. The IPPA provides financial support for up to five younger people to attend the IAP meeting. Further information is available from the IPPA Secretary.

I hope that many people will be able to come to Nagoya. Both the city and the Congress will provide an excellent atmosphere for a fruitful meeting of pediatric pathologists from all over the world.

Dept. of Pathology, University of Kiel, Michaelisstr. 11, 24105 Kiel, Germany, Tel.: +49-431-597-3444, Fax: +49-431-597-3486, e-mail: ileuschner@path.uni-kiel.de

---

### IPPA Council 1998 - 2000

**President:** D. Becroft (1998-2000),  
Auckland, New Zealand  
**President Elect:** J. Dimmick (2000-2002)  
Vancouver, Canada  
**Past President:** K. Misugi (1996-1998)  
Yokohama, Japan  
**Chairman:** L. Boccon-Gibod (1994-2000)  
Paris, France  
**Secretary:** I. Leuschner (1998-2004)  
Kiel, Germany  
**Treasurer:** J. Haas (1996-2002)  
Denver, Colorado, USA

**Subcommittee Editorial Board**  
*Pediatric and Developmental Pathology*  
D. Benjamin, Ft. Worth, Texas, USA

**Subcommittee Education Committee**  
J. Berry, Bristol, UK

### **Elected Members**

I. Moore (until 2000)  
J. Hata (until 2000)  
T. Bourne (until 2000)  
J. Las Heras (until 2000)  
T. Stocker (until 2002)  
Dr. Nakayama (until 2002)  
C. Ridaria (until 2002)  
J. Keeling for IPPA Upgrade Course (until 2002)

## OFFICERS OF CONSTITUENT SOCIETIES

### Paediatric Pathology Society (PPS)

**President:** J. Briner, Aarau, Switzerland  
**President Elect:** R. Kaschula, Cape Town, South Africa  
**Secretary:** G.M. Vujanic, Cardiff, UK  
**Treasurer:** D. O'Hara, Belfast, UK

### Society for Pediatric Pathology (SPP)

**President:** C. Langston, Houston, Texas, USA  
**President Elect:** R. Jaffe, Pittsburgh, Pennsylvania, USA  
**Secretary/Treasurer:** D. Perry, Omaha, Nebraska, USA

### Sociedad LatinoAmericana de Patologia Pediátrica (SLAPPE)

**President:** M.T. García de Dávila, Argentina  
**Secretary:** F. Lubieniecki

### Australian and New Zealand Paediatric Pathology Group (ANZPPG)

**President:** J. Bell, Brisbane, Australia  
**Secretary/Treasurer:** A. Bourne, Adelaide, Australia

### Japanese Society for Pediatric Pathology (JSPP)

**President:** K. Misugi, Yokohama, Japan

**MINUTES OF THE GENERAL MEETING OF  
THE INTERNATIONAL PEDIATRIC PATHOLOGY ASSOCIATION  
OCTOBER 21, 1998, NICE**

- 1) Opening of the General Meeting by the President K. Misugi
- 2) Apologies for absence of J. Las Heras, A. Patrick, V. Anderson
- 3) The minutes of the last General Meeting in Budapest were approved
- 4) Report of the President K. Misugi:

A national Chinese pediatric oncology meeting was organized together with the CCSG (William Newton), supported by the WHO. The Congress of the SIOP, held in Yokohama this year, was a great success. Many participants came from developing countries. The International Congress of the IAP in 2000 held in Nagoya was announced.
- 5) No report of the secretary was available
- 6) Report of the treasurer:

The Society is in a good financial status. A surplus of \$15,190US is on the accounts of the Society. A discussion about the use of this money followed. An increase of the annual fee from \$2US to \$3US was proposed (D. Haust) asking for a motion. This was postponed for two reasons: First the use of the already available money should be decided, and second, the constituent Societies should discuss this matter at their own meetings. The point will be discussed again at the next General Meeting. The following proposals for using the IPPA money were given: 1) supporting up to five young people to come to the IAP Congress by giving \$500US to each (J. Haas), 2) sponsoring a fellowship for training (D. Haust), 3) supporting meetings in developing countries (R. Kaschula). These points were discussed and it was voted to follow the guidelines of Council to use the IPPA money.
- 7) A letter from a Polish Pediatric Pathology Society inquiring about application for membership was read (D. Haust). The letter was forwarded to Council.
- 8) The nomination Committee reported its proposals for new officers:

J. Dimmick - President-elect  
I. Leuschner - Secretary  
C. Ridaria - Council  
Dr. Nakayama - Council  
T. Stocker - Council
- J. Keeling - additional Council Member for the IPPA Course
- The proposal was as accepted by the General Meeting
- 9) A. Bourne reported for the Constitution and Bylaws Committee. It was proposed that the following sentence should be changed:

3.1.1 Membership is open to any person with major laboratory interest or concern in ~~diseases~~ *pathology and/or medical diseases* of children

The majority of the General Meeting accepted this change.
- 10) D. Benjamin, Editor-in-chief of the Journal *Pediatric and Developmental Pathology*, reported about the Journal. The quality and number of submitted manuscripts has increased. The journal will be indexed in the National Library of Medicine at the end of the year.
- 11) J. Berry reported about the two last IPPA Advanced Courses held in Istanbul, Turkey, 1997 (organized by P. Barbet and J. Keeling) and Guidel, France, 1998 (organized by P. Barbet and J. Berry). The next Courses will be in Belfast 1999 and Bristol 2000. The overwhelming work of Jean Keeling for the Course was approved by the General Meeting. Jean Keeling announced the Upgrade Course for people having completed the five IPPA Advanced Courses. It will be held every five years, the first time in September 2000 in Edinburgh, Scotland.
- 12) Ceremony

A Past-President patch was handed to R. Drut by K. Misugi. The President patch was handed to D. Becroft by K. Misugi. A Past-President patch was handed to K. Misugi by D. Becroft.
- 13) Future Meetings:

September 2000: SPP Interim Meeting in Vancouver  
Summer 2000: Pathology Meeting in Zimbabwe (R. Kaschula)
- 14) It was decided to circulate the Agenda of the General Meeting prior to the next General Meeting
- 15) R. Kaschula reported about the lifetime members (12 to his knowledge) and asked whether these persons are all still alive. Otherwise a new lifetime membership could be awarded. He asked for investigation on this topic.

# INTERNATIONAL CONGRESS OF THE INTERNATIONAL ACADEMY OF PATHOLOGY (IAP)

OCTOBER 15-20, 2000

NAGOYA, JAPAN

During the next International Congress several interesting seminars, courses and symposia in the field of pediatric pathology will be held. The program includes the following sessions:

- 16.10.2000 Pathology of sudden infant death syndrome (Symposium), R. BYARD, M. NAKAYAMA  
15.00 - 18.30, Room D (Shirotori Hall North)
- 17.10.2000 Metabolic diseases diagnosed by liver biopsy (Slide Seminar), J.E. DIMMICK  
15.00 - 18.30, Room J (Room 234)
- 18.10.2000 Digestive tract biopsies in children: How we deal with them (Companion Meeting)  
L. BOCCON-GIBOD, K. MISUGI, D. BECROFT, A.J. BOURNE, J. DIMMICK,  
A. LOWICHIK, S. MUSHIAKE, K. PATTERSON, P. DICKMAN  
9.00 - 12.30, Room G (Exhibition Room 212)
- 18.10.2000 Pathology of solid tumors in childhood - recent topics (Symposium)  
H. SHIMADA, J. HATA  
15.00 - 18.30, Room C (Reception Hall 2)
- 20.10.2000 Molecular diagnosis of pediatric diseases (Short Course), D. WITTE  
9.00 - 12.30, Room I (Room 224)

For further information please contact the congress secretariat:

**Secretariat of IAP NAGOYA 2000**  
**Japan Convention Services, Inc.**  
**2-2-1 Uchisaiwai-cho, Chiyoda-ku**  
**Tokyo 100-0011, Japan**  
**Tel: +81-3-3508-1214**  
**Fax: +81-3-3508-0820**  
**e-mail: [iap@convention.co.jp](mailto:iap@convention.co.jp)**  
**<http://convention.co.jp/IAP/index.html>**

**Registration fees** (between May 1, 2000 and July 31, 2000):

Delegates: 55.000 Yen, Residents: 30.000 Yen, Short Course: 5.000 Yen, Slide seminar: 8.000 Yen

The **General Meeting** of the **IPPA** will be on Wednesday, October 18, 2000, at lunchtime. The exact time and the room will be announced during the Symposium on *Pathology of sudden infant death syndrome* (Monday) and the slide seminar on *Metabolic diseases diagnosed by liver biopsy* (Tuesday).

# Officers/Council Members

## Current Officers:

**President:** Claire Langston  
**Past-President:** Joseph Rutledge  
**President-elect:** Ronald Jaffe  
**Secretary-Treasurer:** Deborah Perry

## Council:

Carole Vogler (2001)  
Cheryl Coffin (2001)  
Robert Bendon (2002)  
Glenn Taylor (2002)  
\*Larry Becker (2003)  
\*Liliane Boccon-Gibod (2003)

## COMMITTEE MEMBERS - 2000-2001

### Archives:

\*Stephanie Young (Chair -2003)  
Joan Durbin (2002)  
\*Bahiq Shehata (2003)

### Bylaws:

Glenn Dickey (Chair -2002)  
Maureen Sander (2002)  
Vicky Gresik (2002)  
\*Heather Prashner (2003)

### Distinction & Awards:

\*Jeff Goldstein (Chair -2003)  
Drucilla Roberts (2001)  
Kathleen Heidelberger (2002)  
\*Rafaella Morotti (2003)  
Kathleen Patterson (ex-officio)

### Education:

\*Kathy Patterson (Chair -2002)

### Workshop:

Amy Lowichik (2001)  
Aliya Hussain (2001)  
Edith Marley (2002)  
\*David Witte (2003)

### Abstract:

Charles Timmons (2001)  
Ernest Cutz (2001)  
Cynthia Kaplan (2002)  
\*Ona Faye-Peterson (2003)

### CME:

\*Lisa Teot (2005)  
Sarah Johnson-Welch (2001)  
Gloria Kohut (2001)  
Niru Padiyar (2002)

### Ad Hoc Extramural Education Subcommittee:

Vijay Joshi (2001)  
Derek de Sa (2001)  
Sue Hammond (2002)  
\*Daphne DeMello (2003)

### Fellowship:

Milton Finegold (Chair -2002)  
James Dimmick (2001)  
Jerry Garvin (2001)  
Antonio Perez-Atayde (2001)  
Van Savell (2002)  
Glenn Taylor (2002)  
\*Alba Greco (2003)  
Consultants - Bill Bradford, Bill Donnelly

### Finance:

Joel Haas (Chair -2002)  
Susan Simonton (2001)  
Linda Margraf (2002)  
Beverly Dahms (2002)  
Deborah Perry, Sec-Treas.

### Liaison:

Deborah Perry (Chair)  
Kathy Patterson (2002)  
Ted Pysher (2003)  
Raj Kapur (2003)  
Elizabeth Perlman (2002)  
Robert Novak (2002)  
David Hardwick (2002)

### Long Term Planning:

Derek deSa (Chair -2002)  
Past Presidents: Joseph Rutledge,  
J. Thomas Stocker, James Dimmick  
Edwina Popek (2001)  
Enid Gilbert-Barness (2002)  
\*David Parham (2003)  
Councilors: Carole Vogler, Cheryl Coffin, Robert Bendon, Glenn Taylor, Larry Becker, Liliane Boccon-Gibod

### Membership:

\*Gail Schauer (Chair -2003)  
Fred Askin (2001)  
Theonia Boyd (2002)  
\*Pat O'Shea (2003)  
J. Thomas Stocker - consultant

### Nominating:

Ronald Jaffe (Chair)  
Kevin Bove (2001)  
David Kelly (2002)  
\*Susan Simonton (2003)

### Past Presidents: Joseph Rutledge, J.

Thomas Stocker, James Dimmick

### Practice:

\*Ted Pysher (Chair -2003)  
Dena Selby (2001)  
Margaret Collins (2001)  
Gareth Jevon (2002)  
Debra Heller (2002)  
\*M. John Hicks (2003)  
\*Pierre Russo (2003)  
Slide Survey subcommittee  
Charles Timmons (Chair -2001)  
Leon Metlay (2002)

### Publications:

Ray Redine (2002)  
Robert Novak - coordinator

Beverly Rogers (Chair -2001)  
\*Margaret Collins (2003)  
Bill Donnelly (2002)  
Katrina Hansen (2002)  
\*Yee Khong (2003)  
Ex-Officio  
Denis Benjamin, PDP  
Paul Dickman, Website  
Don Singer, Perspectives  
James Dimmick, Perspectives  
Deborah Perry, Secretary-Treasurer  
Art Weinberg, Newsletter  
Cheryl Coffin -liaison

### Research:

\*Raj Kapur (Chair -2003)  
James Downing (2001)  
Deb Schofield (2001)  
Miguel Reyes-Mugica (2002)  
Hiroyuki Shimada (2002)  
\*Luc Oligny (2003)  
\*Poul Sorensen (2003)  
David Witte -consultant

### Ad hoc Technologies Committee:

Paul Dickman (Chair)  
Liliane Boccon-Gibod  
Halit Pinar  
Glenn Taylor

### Ad hoc Committee on Sections:

Bruce Beckwith  
Kevin Bove  
John Buchino

\*denotes new appointment